

INCIDENT MANAGEMENT SYSTEM

Emergency Management System



Corporate Program Manual

UNCONTROLLED IF PRINTED

Employees with access :	
Adam Sheldon	Shadi Shenouda
(O) (905)832-7316	(O) (905)832-7362
(C) (416)528-5838	(C) (416)779-3064

LOCAL MUNICIPAL/COUNTY AUTHORITIES

MAYOR/REEVE

NAME	ADDRESS	CONTACT NUMBERS			
		BUSINESS	RESIDENCE	CELL	PAGER
Bob Bratina	71 Main St. West	(905) 546-4200			

MUNICIPAL / COUNTY EOC LOCATION

NAME	LOCATION GPS, ADDRESS OR LEGAL	PHONE NUMBER	NUMBER OF RESIDENTS
Hamilton Fire Station	1227 Stone Church Road East First Floor, Hamilton L8W 266	(905) 546-3335	

CHIEF/COUNCIL CONTACT

NAME	ADDRESS	CONTACT NUMBERS			
		BUSINESS	RESIDENCE	CELL	PAGER
Brian McHattie	Hamilton City Hall 2 nd floor – 71 Main St. West Hamilton, Ontario L8P 4Y5	(905) 546-2416			

DIRECTOR OF DISASTER SERVICES

EMERGENCY MEASURES ORGANIZATION

NAME	ADDRESS	CONTACT NUMBERS			
		BUSINESS	RESIDENCE	CELL	PAGER
Dave Cunliffe Director of Fire Operation and Deputy Chief	55 King William Street, Hamilton Ontario	(905)-546-2424 Ext. 3340			
Director of Emergency Medical Services/Deputy Chief	55 King William Street, Hamilton Ontario	905-546-2424 Ext. 7741			

INCIDENT MANAGEMENT SYSTEM

Emergency Management System

**Corporate Program Manual**

UNCONTROLLED IF PRINTED

DATE OF PLAN: July 2014

Name of Site	Compressor Station 209 Ancaster
Legal Land Location	1020 Rymal rd. east Hamilton Ont. L8W 3N6
GPS Location (Degrees decimal)	N 43 11.252 W 79 50.831
Nearest Town / City	Ancaster, Ontario

DETAIL	LOCATION	ATTACHED TO ERP
Facility Schematics	See attached	
Location/Access	Exit Mohawk Road from Hwy 403 to Upper Gage Street then east on Hwy 53 OR QEW West to Highway #20, North 12 km to Highway #53. Right turn (east) 6 km to Station.	
Number and size of pipelines	100-1 NPS 20	

LOCAL EMERGENCY RESPONSE AGENCIES

POLICE	911 or	(905) 546-4925
FIRE DEPARTMENT	911 or	(905) 546-3346
AMBULANCE	911 or	
NEAREST HOSPITAL		Hamilton General Hospital 237 Barton St E Hamilton, ON L8L 2X2 (Directions attached)
TRANSCANADA EMERGENCY LINE		1-888-982-7222
CANUTEC (CHEMICAL INQUIRIES)		1-613-996-6666

INTERNAL COMPANY CONTACTS (ATTACH A LIST OF INTERNAL NOTIFICATIONS)

NAME	NUMBER
TRANSCANADA EMERGENCY #	1-888-982-7222
Regional Roster attached	

RESIDENT CONTACT INFORMATION

Residential contact information is stored in a secured database and will not be attached in this plan to ensure confidentiality. In the event of an emergency this information will be accessed by TransCanada land representatives.

Landowner Database: Landowner database located on the web under Applications – Citrix Applications – Qbyte LM – Prod.

INCIDENT MANAGEMENT SYSTEM
Emergency Management System



Corporate Program Manual

UNCONTROLLED IF PRINTED

PROVINCIAL/STATE DISASTER SERVICES

NAME	ADDRESS	CONTACT NUMBERS			
		BUSINESS	RESIDENCE	CELL	PAGER
Single point of contact for all provincial emergency services					
Emergency Line 24/7 (Ontario)				1-866-314-0472 Press 1 for officer on duty	

LOCAL EVACUATION CENTER(S) FACILITY

NAME	ADDRESS	CONTACT NUMBERS			
		CONTACT NAME	RESIDENCE	CELL	BUSINESS
	Multiple community centers and schools. Residents will be directed to suitable LEC in the event of an emergency via social media				

REGULATORY AGENCIES

FEDERAL REGULATORY AGENCIES

CANADIAN FEDERAL AGENCIES

TRANSPORTATION SAFETY BOARD

ADDRESS	CONTACT NAME	PHONE NUMBERS	FAX NUMBER
Transportation Safety Board Place du Centre 4 th Floor 200 Promenade du Portage Hull, Quebec K1A 1K8	TSB 24 Hour Occurrence Hot Line	(819) 997-7887	(819) 953-7876
Email: PipelineNotifications@tsb.gc.ca Manuel.Kotchounian@tsb.gc.ca Larry.Gales@tsb.gc.ca			

INCIDENT MANAGEMENT SYSTEM
Emergency Management System



Corporate Program Manual

UNCONTROLLED IF PRINTED

NATIONAL ENERGY BOARD

ADDRESS	CONTACT NAME	PHONE NUMBERS	FAX NUMBER
444-7 th Ave. S.W. Calgary, Alberta T2P-3G4	M.L Mantha, Secretary info@neb-one.gc.ca	1-(800) 632-1663 1-403-292-4800 1-800-899-1265	1-877-288-8803

PROVINCIAL / STATE REGULATORY AGENCIES

Agency Name	Contact Name	Address	Primary Phone #	Secondary Phone #
Ministry of Labour	Daytime – Labour Officer After hours – Standby Officer	Ontario Eastern/Northern District, Ottawa	1-800-463-2493 Dial “0”	N/A

PROVINCIAL / STATE ENVIRONMENT AGENCIES

Agency Name	Contact Name	Address	Primary Phone #	Secondary Phone #
Ministry of the Environment	Ontario Spills Hotline – Inspector will dispatch on call officer	N/A	1-800-268-6060	Same #?
Ontario Spills Hot Line	24 hours		1-800-268-6060	
Inspector will dispatch on call officer				

INDUSTRY PARTNERS AND CUSTOMERS:

Company Name	Address	Emergency Number
Union Gas	109 Commissioners Road W, London, ON	1-877-969-0999
Enbridge	3000 Fifth Avenue Place 425 - 1st Street S.W. Calgary, Alberta T2P 3L8 Canada	1-866-763-5427

Local Emergency Equipment

Description of Equipment	Contact	Location of Equipment
Command Post Kit	905.575.6700	garage
Fall Protection	905.575.6700	garage
Backhoe	905.575.6700	garage
First Aid Kit	905.575.6700	Supplies office

Local Hazard Assessments

Identify hazards that may affect the health and safety of employees, responders and others. For example; High quantities of dangerous chemicals stored on site.

Hazard	Additional Procedures
High Pressure Natural Gas	Within aboveground and below ground piping
High Levels of Noise	Natural Gas venting Inside buildings as per signage <ul style="list-style-type: none"> • Single or double hearing protection required as per signage
High Temperatures	Electric drivers Compressor
Gas Compressor Lubricating Oil Vapours/Smoke	Contained within Unit and in Secondary Containment buildings equipped with sump alarms
Stored Chemicals	Stored in ventilated storage area in upper garage

**Evacuation Procedures
Station 209**

In case of an emergency:

Follow the Procedures of the Emergency Management System. Refer to the Action Checklist for the First Responder and Emergency Site Manager.

1. Stay calm; do not put yourself at risk. The First Responder will act as the Emergency Site Manager until relieved.
2. Alert the personnel on site. Activate the emergency alarm on site by pressing 5555 on the telephone (note: to deactivate press 5556)

3. Obtain the Visitor Sign in Sheet Located in the main office area and the local Emergency Plan located in the lunch room and proceed to the Emergency Meeting Area #1 at the Main Entrance Gate if safe to do so. A head count will be initiated using the Visitor Sign in Sheet. If unable to proceed to the Emergency Meeting Area #1, proceed to the Emergency Meeting Area #2 at rear gate.
4. Contact Local Emergency Services (Fire, Police, Ambulance) listed in the Local Emergency Plan, to attend the scene as required. In unable to contact Local Emergency Service contact the TransCanada Emergency number 1-888-982-7222 and ask them to make contact. If a phone is unavailable, use the Satellite Phone to contact Gas Control and request they contact Local Emergency Services.
5. Call the TransCanada Emergency Number 1-888-982-7222
6. Assess the situation
 - Rescue if necessary to preserve life and if safe do so
 - Administer first aid as required
 - Conduct searches to anyone unaccounted for in head count if safe to do so
 - Secure the area. The may include activating a Plant or Station ESD, a Plant Fire ESD or Line isolation if safe to do so.

ISOLATION AND SHUT-OFF PROCEDURES

Station 209

Station and Mainline Line Isolation Overview

On the Mainline Gas system, the line isolation commands are designed to isolate individual or multiple lines, suction and/or discharge from the compressor station (if applicable) and from the other lines which are not required to be isolated.

Initiation of an isolation command to a suction line will close all upstream tieover valves connected to that line, close all suction side valves connected to that line (which connect the pipeline to the compressor station), and close the mainline valve. Initiation of an isolation command to a discharge line will close all downstream tieover valves connected to that line, close all discharge side valves connected to that line (which connect the pipeline to the compressor station), and close the mainline valve. In both cases, the fully closed status of the affected valves is monitored. If all affected valves do not indicate fully closed within a specified period of time (typically three minutes), an isolation failure alarm is initiated for the suction and/or discharge side of that line. In addition, when the suction and/or discharge side of the line is isolated, the local HMI and Gas Control screens will indicate the suction and/or discharge line as being isolated.

Valve Sequence Emergency Shutdown (ESD)

1. When a SESD is initiated, an alarm will sound, the unit(s) will shutdown, the station suction valves and station discharge valves will close, thus isolating the station piping from the mainline.
2. When station valves are FULLY closed the station blow-down valves will open, depressurizing the main yard.
3. When the differential pressure across the mainline block valves reaches 20 PSI, the MLV's will open allowing the gas flow to bypass the station.
4. When a plant ESD is initiated, an alarm will sound, plant unit will shutdown, plant Isolating valves will close and Blow down valves will vent the plant unit related piping.
5. When a unit ESD is initiated, an alarm will sound, the unit will shutdown, Isolating valves will close and Blow down valves will vent the unit related piping.

Isolation procedure

Line break between station 209 and 211

- Isolate line 100 using Isolate All for Station 209 and 211 via the SCADA Yard Display, Isolate Menu and Isolate All Command. This procedure is done for each Station.
- Confirm that all isolation valves are closed
- Continue to monitor all pipeline pressure.

Emergency Response Plan

1.0 TO ACCESS FIRST AID SERVICES:

- 1.1 In the event of an incident where a worker(s) are injured or become ill, immediately get assistance from the First Aid designate on site and immediately report the incident to the TransCanada Active Control.
- 1.2 TransCanada or Contractor site supervision to contact emergency responders at 911 to obtain advanced emergency assistance if appropriate to the situation

2.0 CALLING 911 (*NOTE: MUST DIAL 9-911 FROM ANY STATION PHONE)

Calling 911 can be stressful and it's easy to feel overwhelmed. 911 call-takers are trained to guide callers through the experience, but knowing what to expect can help make the 911 call go smoothly and get emergency help where and when it's needed.

1. Stay calm. It's important to take a deep breath and not get excited. Any situation that requires 911 is, by definition, an emergency. The dispatcher or call-taker knows that and will try to move things along quickly, but under control.
2. Know the location of the emergency and the number you are calling from. This may be asked and answered a couple of times but don't get frustrated. Even though many 911 centers have enhanced capabilities -- meaning they are able to see your location on the computer screen -- they are still required to confirm the information. If for some reason you are disconnected, at least emergency crews will know where to go and how to call you back.
3. As the call progresses, you will hear clicking - do not hang up!
4. Wait for the call-taker to ask questions, and then answer clearly and calmly. If you are in danger of assault, the dispatcher or call-taker will still need you to answer quietly, mostly "yes" and "no" questions.
5. If you reach a recording, listen to what it says. If the recording says your call cannot be completed, hang up and try again. If the recording says all call-takers are busy, *wait!* When the next call-taker or dispatcher is available to take the call, it will transfer you.
6. Let the call-taker guide the conversation. He or she is typing the information into a computer and may seem to be taking forever. There's a good chance, however, that emergency services are already being sent while you are still on the line.
7. Follow all directions. In some cases, the call-taker will give you directions. Listen carefully, follow each step exactly, and *ask for clarification* if you don't understand.
8. Keep your eyes open. You may be asked to describe victims, suspects, vehicles, or other parts of the scene.
9. Do not hang up the call until directed to do so by the call-taker

3.0 EMERGENCY GUIDELINES:

- 3.1 Stay on phone or radio and maintain contact.

3.2 Dispatch a guide with a vehicle if necessary and radio/cell phone to guide emergency personnel from closest Emergency Meeting Point as identified.

3.3 Send the emergency personnel with the appropriate means for transportation to the injured person.

(NOTE: The first aid and transportation equipment available and the nature of the person's injuries will determine the above responses).

3.4 Have a First Aid provider assist with immediate treatment to their level of training.

3.5 Do not move the injured person if:

- (a) There is danger of further injury to the injured person
- (b) The position of the person will not interfere with giving first aid
- (c) There has been sufficient initial treatment rendered by a qualified person

3.6 If injury is serious or critical, all workers must be prepared to assist; radio messages may have to be relayed. First aid equipment (i.e. stretcher, back board) may need to be carried to the scene. All work will cease for fatalities or major incidents pending accident investigation by local or government agencies.

3.7 All other tasks, including head counts, and the implementation of evacuation procedures as required, are to be completed by and coordinated through the Active Control. They will be accountable for all workers on the site.

4.0 TRANSPORTATION GUIDELINES:

4.1 Minor injury or illness (non-rapid transport)

- (a) The injured or ill person will receive initial treatment from a First Aider. The First Aider will then have the worker either;
- Return to work
 - Seek medical attention at a hospital or clinic
 - Be transported to a medical facility in a designated vehicle and accompanied by an appropriate authority (i.e. foreperson or delegate). A trained first aider shall accompany the injured worker(s) to the medical facility.

4.2 Serious injury or illness (rapid transport)

- (a) A First Aider will drive or be transported to the scene.
- (b) After initial assessment, the First Aider will arrange to transport the injured person by the most appropriate means available (air transport may be required) and the injured person will be accompanied by an appropriate authority (i.e. foreperson or delegate) and a First Aider
- (c) If air transport is required, a suitable landing site may have to be selected as close to the scene as possible.

* Response by helicopter:

Generally, a helicopter will be able to manoeuvre within:

- 75 - 100 ft. (diameter) provided the area is free from trees, hydro wires

Ensure housekeeping; garbage is removed; tools and equipment are cleared and secured, in the immediate landing area. When landing, the medical evacuation helicopter produces a violent downdraft, which is potentially harmful especially in places where loose gravel and sand are present. Individuals not in immediate contact with the injured person should seek cover in closed vehicles/equipment due to airborne debris. Those aiding the injured person should turn away while protecting themselves and the injured person with blankets etc. as much as possible.

DO NOT approach the helicopter until direct instructions to do so are received from the pilot or other member of the Emergency Response Team. **DO NOT** approach or walk away from a helicopter from up-hill, from the front or from the rear due to rotor (blade) dipping and tail propeller.

ALWAYS APPROACH THE HELICOPTER FROM THE SIDE!

5.0 WORKING IN LIGHTNING STORMS

**The use of Lightning Detectors is recommended.*

- a. Lightning may strike several kilometers away from the parent cloud or storm. Precautions should be taken even though the thunderstorm is not directly overhead.
- b. If working outside, keep an eye on the sky. If you see lightning or hear thunder, take shelter immediately.
- c. Practice the "Flash-to-bang" measurement of lightning distance. This is the time from seeing the strike to hearing the thunder. For each 5 - second count, lightning is 1 mile away or for each 3 - second count, it is 1 kilometer away. At a count of 15 seconds (3 miles or 5 kilometers), or less, take immediate defensive actions; **immediately stop all work and take shelter.**
- d. Once indoors, stay away from windows and doors and keep them closed. Do not go back outside unless absolutely necessary. Turn off and stay away from appliances, power tools, etc. Lightning may strike electrical and phone lines and induce shocks.
- e. Electrical conductors including power lines, tall objects, high places and bodies of water attract electricity and lightning. Metal items like bicycles will conduct electricity so avoid using them when a storm approaches.
- f. Never get closer than 30 meters to metal fences and take off shoes that have metal cleats. Steel-toe safety boots do not have to be removed.
- g. If driving and it is safe to do so, pull off the road, close the windows, stay in the vehicle and turn on the emergency flashers until the storm has subsided. Lightning moves over the outer surface of metal objects, so you are safe inside an all-metal vehicle. But avoid touching anything metal inside, keep your hands in your lap. Do not park near trees or power lines that may collapse during the storm. If a power line falls on or near your vehicle, do not step outside.

- h. After the storm, wait until the ALL CLEAR is given by the Active Control or Site Superintendent.
- i. If a person is injured by lightning, call 911 (**9-911 from station phones**), and administer first aid, if you are qualified to do so. An injured person does not carry an electrical charge and can be handled safely. Look for burns where lightning entered and exited the body. If the strike caused the victim's heart and breathing to stop, perform CPR (cardiopulmonary resuscitation) if you are qualified to do so, until Emergency Services arrives and takes over.

6.0 FIRE

- a. Remain calm. Assess the situation. Assess the scene for other persons involved.
- b. Call 911 (**9-911 from station phones**) Immediately and advise of the fire.
- c. Advise the Active Control or his/her designate.
- d. If anyone involved in the incident is injured obtain First Aid and then contact the Active Control.
- e. Contact an Ambulance (# 911) if the injuries are beyond the control of the first aid attendant. Use the 911 Communication Procedure contained in this ERP.
- f. When using a fire extinguisher aim the nozzle just before the base of the fire and move the extinguisher from side to side and slowly towards the center of the fire to smother the fire. After always back away from a fire. There are 4 classes of fires. Each class is based on the type of combustible material involved.
- g. **Classes A- These types of fires involve** the combustion of cloth, paper, plastic, and wood materials. This class of fire can be extinguished with water or a Type ABC Extinguisher.
- h. **Class B-** These types of fires involve flammable liquids or gases such as diesel fuel, gasoline, and grease. This class of fire can be extinguished by eliminating the fuel source or with a Type ABC Extinguisher. **DO NOT USE WATER TO EXTINGUISH THIS TYPE OF FIRE.**
- i. **Classes C- These types of fires are** electrical fires and can be extinguished by a Type ABC Extinguisher. **DO NOT USE WATER TO EXTINGUISH THE FIRE UNLESS ALL THE POWER HAS BEEN ELIMINATED TO THE AREA. SEE LOCK OUT MANUAL**
- j. **Class D-** These types of fires involve the combustion of metals such as magnesium or highly flammable liquids such as acetone. For these types of fires.

DO NOT ATTEMPT TO EXTINGUISH THIS TYPE OF FIRE. **

- k. If the situation cannot be controlled with resources available at the site ensure the safety of all workers until the Fire Department arrives;
- l. A supervisor will send a driver to the Emergency Meeting point to direct emergency personnel to the exact location of the fire.
- m. Assemble in an area away from the fire. (Go to your Emergency Assembly Area / Muster Station).

- n. The Active Control or his/her designate will conduct a head count.
- o. The Active Control or designated person will inform the emergency personnel of any missing persons.
- p. If the situation can be dealt with safely then proceed with the following steps;
- q. Eliminate any surrounding ignition sources and power to the affected area if safe to do so.
- r. If a chemical is involved identify the chemical by the label or other observable characteristics.
- s. Consult the corresponding Material Safety Data Sheet (MSDS) and extinguish the fire with an appropriate extinguishing media.
- t. Notify the Active Control.
- u. The Active Control will notify the Project Manager of the incident.

7.0 TRUCK EQUIPMENT ROLL OVER

- a. Switch off the engine and all power to every part of the equipment, if possible.
- b. Assess the situation.
- c. Exit the vehicle if safe to do so.
- d. Assess the incident scene for other persons involved.
- e. If anyone involved in the incident is injured contact the Active Control.
- f. Contact an Ambulance (# 911) if the injuries are beyond the control of the first aid attendant. Refer to the Calling 911 procedure in Section 2.0 of this ERP.
- g. Use the Spill-kit (Located in the service lay down, or HSE pickup) to prevent any spread of oil, diesel fuel, or hydraulic fluid. See Appendix #B regarding spill reporting regulations.
- h. Contact the Active Control and inform him/her of the incident and the location.
- i. Do not upright the vehicle until directed to do so.
- j. The incident scene is not to be tampered with until an investigation has been conducted under the direction of Active Control.

****Note: The book of Material Safety Data Sheets is located in the Job Shack office. ****

8.0 NOTIFICATION OF MINOR INJURY:

- a. A Supervisor shall notify the TransCanada Active Control, E. S. Fox Health & safety Representative and the E. S. Fox Site Superintendent immediately.
- b. The Active Control shall notify the Project Manager immediately following the incident flow chart and Communications Accountability protocol.

9.0 CEASE WORK:

9.1 In the event of a major incident the Active Control, Project Manager or HSEC will:

- (a) Order all work on the project to cease.
- (b) Order an employee head count to be taken. (if required)
- (c) Order all equipment used at the time of the incident to remain in position until appropriate Local or Government Agencies' investigation is complete (Except to facilitate the rescue of any injured personnel and to safeguard the area in order to protect from further incidents).
- (d) Inform witnesses of the incident to remain available until their statements have been given to the Local or Government Agencies.
- (e) Advise the Area Manager.

10.0 ENVIRONMENTAL EMERGENCY:

It is the intention of TransCanada to exercise every reasonable effort to mitigate negative environmental impact.

10.1 NON-HAZARDOUS SPILL

- a. Utilise available equipment to create dykes or trenches to prevent the contaminants from reaching a water resource.
- b. Excavate contaminated soil.
- c. Backfill excavation with indigenous soil material.
- d. Contaminated soil is to be contained / stored as per TransCanada's Waste & Hazardous Materials Handling Manual direction.
- e. Contaminated soil to be disposed of at an approved facility as per applicable government regulations and TransCanada's TOPs. Receipt is to be kept on file at the site office for the duration of the project.

NOTE: Small spills may be handled effectively with the use of absorbent pads and or spill kits with follow up action as per TransCanada's direction.

10.2 HAZARDOUS SPILL

Only workers specially trained in response should handle a hazardous material spill, incorporating the following work practice:

- (a) Isolate the spill area so others are not exposed.
- (b) If the situation is life threatening or warrants immediate attention, call 911 (**9-911 from station phones**) (Provide emergency response personnel with appropriate information on the type of spill, type of facility, location etc.)

- (c) Refer to the product's Material Safety Data Sheets (MSDS) for associated hazards and potential routes of entry (skin absorption, Inhalation, eye irritant etc.)
- (d) If you are able to do so without coming into physical contact with the material **and** your health and safety is adequately ensured through the use of Personal Protective Equipment (or other control measure) attempt to contain the spill. (use absorbent materials; create a barrier to the flow etc.)
- (e) If safe and appropriate clean up methods for the hazardous product are not known, contact the HSEC for proper direction.
- (f) If cleanup methods are beyond the scope of the project personnel, local agencies will be contacted.

NOTE: A spill of this type must be reported A.S.A.P. to the Active Control or Assistant Active Control, who will immediately report the incident to TransCanada's Project Manager, HSEC and to TransCanada Senior Management.

10.3 ENVIRONMENTAL SENSITIVITY

TransCanada is further committed to environmental hazard mitigation, which is addressed on a project basis through Job Hazard Analysis (JHA) and Safe Work Practices when appropriate. These areas include, but are not limited to:

- ✓ Equipment refuelling and maintenance areas
- ✓ Construction materials and staging areas
- ✓ Waste management including construction waste (oils and fluids, Hydro-vac slurry etc)

10.4 EVACUATION PROCEDURE

In the event of a leak or rupture of any pipeline:

- a. Stop work, turn off all equipment (use emergency air shut-off if equipped) and extinguish all sources of ignition.
- b. Call 911 (**9-911 from station phones**)
- c. Evacuate work site (on foot), precede upwind/cross wind to a muster point.
- d. Call for help and maintain telephone/radio contact.
- e. **Contact Active Control report the problem**
- f. Secure the area.
- g. Conduct a head count.

- h. Inform the Active Control.

11.0 EARTHQUAKE

- a. Remain calm.
- b. Pull your equipment over in a safe manner, stop operating, stay in your equipment.
Stay off the radio wait for instructions from your supervisor or Active Control
- c. If in a building take cover under a table, doorway, etc. and remain there until the shaking stops.
- d. Face away from windows to avoid any shattering glass.
- e. Be prepared for any aftershocks.
- f. Check for injured or trapped persons in your immediate area.
- g. If workers are trapped if able to do so safely try and free them.
- h. Call for assistance if unable to free persons.
- i. Apply first aid to injured persons and in the case of a serious injury contact emergency responders at 911.
- j. Move to designated muster stations.
- k. Do not enter any buildings following the earthquake.
- l. The Active Control or HSEC will designate personnel to inspect site, fuel tanks, buildings and operating systems.

12.0 EXPLOSION

- a. An explosion can result from flammable gas that comes into contact with an ignition source following discharge from a container.
- b. If an explosion occurs proceed with the following steps;
- c. Call 911 (**9-911 from station phones**)
- d. Inform the Active Control immediately.
- e. Evacuate to the rally/muster point
- f. The Active Control or assistant Active Control will immediately contact HSEC and TransCanada's ERT.
- g. All employees are to meet at the designated Emergency Assembly Area / Muster Point.
- h. The Active Control will conduct a head count.
- i. The Active Control will instruct persons to conduct a SEARCH of the area, if safe to do so.

15.0 ELECTROCUTION

The danger from an electrical shock depends on the type of current, how high the voltage is, how the current traveled through the body, the person's overall health and how quickly the person is treated.

Call 911 (**9-911 from station phones**) or your local emergency number immediately if any of these signs or symptoms occurs:

- a. Cardiac arrest
- b. Heart rhythm problems (arrhythmias)

- c. Respiratory failure
- d. Muscle pain and contractions
- e. Burns
- f. Seizures
- g. Numbness and tingling
- h. Unconsciousness

While waiting for medical help, follow these steps:

- **Look first. Don't touch.** The person may still be in contact with the electrical source. Touching the person may pass the current through you.
- **Turn off the source of electricity, if possible.** If not, move the source away from you and the person, using a dry, non-conducting object made of cardboard, plastic or wood.
- **Check for signs of circulation (breathing, coughing or movement).** If absent, begin cardiopulmonary resuscitation (CPR) immediately.
- **Prevent shock.** Lay the person down and, if possible, position the head slightly lower than the trunk with the legs elevated.

After coming into contact with electricity, the person should see a doctor to check for internal injuries, even if he or she has no obvious signs or symptoms.

Caution

- **Don't touch the person with your bare hands** if he or she is still in contact with the electrical current.
- **Don't get near high-voltage wires** until the power is turned off. Stay at least 20 feet away — farther if wires are jumping and sparking.
- **Don't move a person** with an electrical injury unless the person is in immediate danger.

16.0 BOMB THREATS

Possible Major Effects

- Casualties
- Deaths
- Trapped persons
- Disruption of business
- Damage to property/structural failure
- Media attention

Potential Actions

- Warning - by telephone/mail/Municipal Authorities
- Establish Incident Command Post
- Evaluation - will this event cause major effects?

- No = Resolve situation, make appropriate notification as required
- Yes = Call the appropriate emergency line
- Contact the appropriate emergency line
- Alert employees - Fire Warden
- Evacuation - Fire Warden
- Coordination with Municipal Authorities - Incident Commander
- Searching building - Fire Warden - Municipal Police
- FIRE/EXPLOSION - Refer to FIRE/EXPLOSION procedures
- Damage assessment - Operations/Safety
- First Aid and Rescue - Municipal EMS/Fire - Security /Safety
- Police/Fire Investigator Liaison - Corporate Security
- Temporary office space and transportation – Resources
- Auxiliary power setup - Operations
- Facility debris and clean up- Operations/cleaning contractor
- Media attention - media specialist

If you have experienced a bomb threat, you must complete the Bomb Threat After Action form (ID 005783558) in conjunction with the Bomb Threats section of the Security Threats Procedure (EDMS No. 005783557).

Appendix A Environmental and Spill Response

1. First Response in Incidents or Spills Involving Hazardous Products
 - a) **Approach Cautiously from Upwind.** Resist urge to rush in until situation is assessed. Others cannot be helped if first responders put themselves at risk.
 - b) **Secure the Scene.** Without entering hazard area, isolate the area and keep people outside the safety perimeter.
 - c) **Identify the Hazards.** Placards, labels, shipping documents and persons on scene can provide information about the materials involved. Refer to *MSDS* sheets, the *North American Emergency Response Guidebook* and/or Call CANUTEC for information about appropriate response if assistance is required.
 - d) **Assess the Scene.** Consider the following: fire, spill or leak; weather conditions; terrain; are people, property or the environment at risk; what actions are necessary, i.e. evacuation, dykes; resources at hand and what can be done immediately to control or minimize the impacts of the incident,
 - e) **Obtain Help.**
 - f) **Decide on Site Entry.** Enter site only when safe; use appropriate PPE.
 - g) **Respond.** In an appropriate manner, establish site command if needed, rescue evacuate, continually reassess and modify as needed. First priority is safety of people in the immediate area.
 - h) **Above All** avoid inhaling fumes, vapours or smoke and do not touch or walk through products.

2. The following materials will be available as required, at locations convenient to the work:
 - a) Geotextile material
 - b) Straw bales, sand and sand bags
 - c) Plastic snow fence and silt fencing
 - d) Miscellaneous pumping equipment
 - e) Absorbent spill response material, e.g. absorbent pads, etc.
3. Fuel trucks and service trucks will, as a minimum, carry the following as spill contingency equipment:
 - a) Spill kit with suitable quantity of absorbent material
 - b) A shovel, and
 - c) A supply of industrial strength garbage bags.
4. Typical Cleanup and/or Containment for Non-Hazardous Products Spills:
The following describes the basic steps to be used by Contractor personnel when cleaning up and/or containing spills, when it is deemed to be safe to do so, by personnel on the scene.

4.1 Small Quantity

- a) Stop further release of product (if applicable and safe to do so)
- b) Use absorbent material to pickup spilled product, and/or
- c) Pick up contaminated soils with a shovel
- d) Place in industrial strength garbage bags and/or other suitable container, e.g. barrels
- e) Transport to Contractor Marshalling yard
- f) Transport to approved disposal facility

4.2 Large Quantity

- a) Stop further release of product (if applicable and safe to do so)
- b) Use heavy equipment, i.e. a dozer, excavators, etc., to contain spilled material by berming or dyking
- c) Obtain assistance for gathering of spilled materials, e.g. vacuum truck, etc.
- d) Gather and pick up contaminated soils with dozers/excavators
- e) Transport contaminated soils in suitable containers to approved disposal facility.

5. Disposal of Spilled Materials and/or Contaminated Soils/Materials

These soils and materials shall be disposed of in accordance with regulations and TransCanada TOPs. Generally, materials will be taken to an approved treatment facility / site and a receipt will be obtained and kept on record for the duration of the project.

**Directions to Hamilton General Hospital
237 Barton St E
Hamilton, ON
L8L 2X2**

1. Head **south** on **Valens Rd** toward **Safari Rd**
2. Turn right onto **Safari Rd** (*10.7 km*)
3. Turn right onto **ON-6 S** (signs for **Queen Elizabeth Way/ON-403**) (*11.1 km*)
4. Keep right at the fork, follow signs for **ON-403 W/Ontario 6 S/Brantford** and merge onto **ON-403 W/ON-6 S** (*3.6 km*)
5. Take the **Main St** exit toward **ON-8 E** (*750m*)
6. Merge onto **Main St W** (*2 km*)
7. Turn left onto **John St S** (*1 km*)
8. Turn right onto **Barton St E**

INCIDENT MANAGEMENT SYSTEM

Emergency Management System



Corporate Program Manual

UNCONTROLLED IF PRINTED



TRANSCANADA OPERATING PROCEDURE (FORM)



Title: Chemical Inventory Form

EDMS No. 003672314 Revision: 12 Effective Date: 2014.04.03 Status: Issued
TOP Contact: Rob Kelly

Instructions:

1. This form is to be completed in conjunction with the TOP entitled 'Chemical Inventory Inspection' (EDMS No 003887957)
2. Save this form using the following naming convention:
• 'Station or Location NAME_ASSET_YEAR_Chemical Inventory_REGION' e.g. 'Rosalia Compressor Station 2014 Chemical Inventory Borders West.xls'
3. Attach the completed form to the SAP Work Order (refer to IPSECA user guide) and send a soft copy to the above noted TOP Contact.
4. For information on filing and the onsite/offsite retention requirements, please refer to the 'Field Operations Facility File Structure' compliance list (EDMS No. 003794696).

SITE NAME & REGION: Ancaster Compressor Station 209					Prepared By: Mike Labbe		
Date Completed: 3/19/2014					Phone Number: 905 388 5171		
Location at Site (i.e. Storage Rm, Cabinet, Garage, In-Process Equipment, etc.)	Chemical / Product / Brand Name (exactly as specified on the SDS)	Manufacturer	*Intended Use (choose from the drop down list)	SDS in 3E Database? (yes/no)	Combustible/Flammable Product? (Ontario Only)	Physical State (solid, liquid, gas, etc.)	Amount on Hand
Yellow cabinet	Grease tube EP32	Petro Canada	Lubrication	yes	1097789	solid	0
Yellow cabinet	Fuel oil conditioner diesel	Fuel flow	Cleaner/Degreaser: Equip/Tools (Industrial)	yes	544	liquid	1 1L
Yellow cabinet	Moly coat	Lawson	Lubrication	yes	19850	aerosol	2 15oz
Yellow cabinet	Gear oil	Valvoline	Lubrication	yes	1484	liquid	0 1L
Yellow cabinet	WD 40	WD40	Antiseize	yes	397	liquid	1 3L
Yellow cabinet	Inhibitor	U car	Boiler Treatment	yes	574124	liquid	2 6L
Yellow cabinet	Hydraulic oil	Motomaster	Lubrication	yes	66359	liquid	1 4L
Yellow cabinet	Hydraulic oil	Motomaster	Lubrication	yes	66359	liquid	1 10L
Yellow cabinet	Kwikut	Lawson	Cutting Oil	yes	210202	aerosol	5 16OZ
Yellow cabinet	Cutting fluid	ETP	Cutting Oil	yes	301731	aerosol	4 16oz
Yellow cabinet	Cutting fluid	ETP	Cutting Oil	yes	301731	liquid	2 16oz
Yellow cabinet	Resolve	Dustbane	Cleaner/Degreaser: Equip/Tools (Industrial)	yes	5831	liquid	1 20 L
Yellow cabinet	XL 300 air comp. oil	Ingersol Rand	Lubrication	yes	750952	liquid	0 3.8 L
Yellow cabinet	Penetrating oil	United	Antiseize	yes	15577	aerosol	6 397 g
Yellow cabinet	Nut Cracker	United	Antiseize	yes	15577	aerosol	2 16 oz
Yellow cabinet	Brake clean	CRC	Cleaner/Degreaser: Equip/Tools (Industrial)	yes	9103	aerosol	13 539 g
Yellow cabinet	Gear oil	Valvoline	Lubrication	yes	1484	liquid	0 1l
Yellow cabinet	AeroKroil	kano	Antiseize	yes	23260	aerosol	17x 311g
Yellow cabinet	Wd 40	WD 40	Antiseize	yes	397	aerosol	1 369 g
Yellow cabinet	Dry film	LPS	Lubrication	yes	30184	aerosol	39 12oz
Yellow cabinet	Chisel gasket remover	Loctite	Cleaner/Degreaser: Equip/Tools (Industrial)	yes	827	aerosol	1 15.5 oz
Yellow cabinet	Penetrating oil	united 7	Cleaner/Degreaser: Equip/Tools (Industrial)	yes	15577	aerosol	6 13 oz
Yellow cabinet	Tef Gel	Lawson	Lubrication	yes	49808	aerosol	3 13 oz
Yellow cabinet	Gasket remover	Rotanium	Cleaner/Degreaser: Equip/Tools (Industrial)	yes	9103	aerosol	0 12 oz
White Cabinet	Raid wasp/hornet	Johnson	First Aid	yes	296743	aerosol	38 400g
White Cabinet	Paint Thinner	Rona	Paint / Paint Products	yes	302154	liquid	4 1L
White Cabinet	Paint Thinner	Recordsol	Paint / Paint Products	yes	302154	liquid	1 3L

INCIDENT MANAGEMENT SYSTEM

Emergency Management System



Corporate Program Manual

UNCONTROLLED IF PRINTED

White Cabinet	Methyl Hydrate	Rona	Antifreeze / Coolant	yes	15173	liquid	5 1L
White Cabinet	Quick Mark orange	Krylon	Paint / Paint Products	yes		aerosol	9 17oz
White Cabinet	Quick Mark Pink	Krylon	Paint / Paint Products	yes		aerosol	8 17 oz
White Cabinet	Red Paint	J2	Paint / Paint Products	yes	661189	aerosol	8 340 g
White Cabinet	Yellow	J2	Paint / Paint Products	yes	424146	aerosol	34 340g
White Cabinet	Rust paint	Tremclad	Paint / Paint Products	yes	9085	aerosol	2 3.78L
							3 3.87 litre pails
White Cabinet	Solvent	International	Paint / Paint Products	yes	9103	liquid	
White Cabinet	Denso Primer D	Denso	Paint / Paint Products	Yes	1993	Semi-liquid	12 5 litre pails
White Cabinet	Quick Mark Pink	Krylon	Paint / Paint Products	yes		aerosol	8 17 oz
Enviropac #1	Mobile - Univis HNI 13 hyd. Oil	Mobile 1	Lubrication	yes	1668	Liquid	
Enviropac #2	Esso Pro con 20L	Esso	Lubrication	yes	706	Liquid	
Enviropac #3							
Enviropac #4							
Enviropac #5	Empty Fuel Containers		transportation				
Enviropac #6							
Enviropac #7	Empty Barrel						
Enviropac #8							
Enviropac #9	Transmission/ converter fluid 20L	CASE IH	Lubrication	yes	1484	Liquid	
Enviropac #10							
Enviropac #11	(Water in container, needs to be emptied)						
Enviropac #12							
Enviropac #17	Methonal	Stanchem	paint/ paint products	yes	13572		
Enviropac #18	Waste oil water		waste				
Enviropac #19	Air compressor oil	petro Canada	Lubrication	yes	66359	Liquid	1 x 20l
Enviropac #20							
Enviropac #21	Clenvex ICD 177	Castrol	Cleaner/Degreaser: Equip/Tools (Industrial)	yes	377296	Liquid	8x 20L
Enviropac #22	Isopropanol	Brentag Canada	Cleaner/Degreaser: Equip/Tools (Industrial)	yes	646872	Liquid	3x 20L
Enviropac #23							
Enviropac #24							
Enviropac #29	U cartherm	Union Carbide	Boiler treatment	yes	56195	Liquid	1205L
Enviropac #30	Empty Barrel						
Enviropac #31	Empty Barrel						
Enviropac #32	Empty Barrel						
Enviropac #33							
Enviropac #34							
Enviropac #35							
Enviropac #36							
Enviropac #37							
Enviropac #38							
Enviropac #39							
Enviropac #40							
Enviropac #41	Empty Barrel						

INCIDENT MANAGEMENT SYSTEM

Emergency Management System



Corporate Program Manual

UNCONTROLLED IF PRINTED

Eastern Region Telephone Directory - June 2014.xls

Eastern Region Employee Contact Numbers				Eastern Region Facility Numbers		
Name	Location	Office	Cell	Name	Office	Fax
Alam, Usman	ERO	905-832-7345	416-938-9568			
Bouchard, Carole	148	450-370-4700		Eastern Regional Office	905-832-7390	905-832-7391
Bouchard, Guy	148	450-370-4725	514-214-2619	Eastern Region EOC	905-832-7323	905-832-7391
Brick, Jason	134	905-723-1610	416-831-6903	Stn.119 Sunridge	705-384-7377	705-384-0473
Buchanan, Karl	142	613-530-4617	613-217-8793	Stn.123 Bracebridge	705-645-2481	705-645-3393
Caren, Brian	130	905-832-7361	416-529-4572	Stn.127 Barrie	705-721-1011	705-721-0899
Caren, Michelle	ERO	905-832-7335	416-525-8557	Stn.130 Maple	905-832-2967	905-832-7391
Carriere, Paul	1301	519-622-9980	519-502-4418	Stn.134 Bowmanville	905-723-1610	905-576-3205
Casamatta, Saveria	ERO	905-832-7326		Stn.136 Grafton	905-349-2112	905-349-3237
Chisholm, Ian	130	905-832-7334	647-232-9509	Stn.139 Shannonville	613-962-4614	613-962-9184
Clermont, Sylvain	L'Assomption	450-589-8421 or 5961	514-216-7640	Stn.142 Kingston	613-549-3005	613-546-2417
Comeau, Michael	209		416-476-8593	Stn.144 Brockville	613-348-3758	613-348-3868
Cowan, Greg	1401	613-652-1350	613-340-4365	Stn.147 Cornwall	613-528-4700	613-528-4404
Croteau, Mathieu	Lachenaie	450-966-6145	514-713-4937	Stn.148 Les Cedres	450-452-2131	450-452-4707
Davis, Andy	1206	705-747-0022	705-498-9230	Stn. 209 Hamilton	905-388-5171	905-388-0213
Dimarco, Garrett	142	613-530-4618	613-328-9754	Stn. 211 Lincoln	905-563-3716	905-563-0628
Dixon, Justin	ERO	905-832-7315	416-433-3269	Stn. 802 St.Philippe	450-659-8163	450-659-8330
Dobrin, Radu	ERO	905-832-7394	416-808-1270	Stn.1206 Deux Rivières	705-747-0022	705-747-0043
Douville, Marcel	Lachenaie	450-966-6145	514-219-4806	Stn.1211 Pembroke	613-735-6895	613-735-6896
Doyle, Kevin	123	705-645-2481	705-641-9047	Stn.1217 Stittsville	613-831-8593	613-831-6127
Ellis, Jason	123	705-645-2481	705-641-0558	Stn.1301 Kirkwall	519-622-9980	519-622-3638
Fauchonier, Yan	L'Assomption	450-584-8421	514-236-3156	Stn.1401 Iroquois	613-652-1350	613-652-1352
Fournier, Yvan	148	450-370-4726	514-863-8656	Stn.1703 Niagara Falls	905-295-3845	905-295-8561
Fraser, Kyle	147	613-528-4700	613-330-2411	Magog Office (TQM)	819-843-0258	819-843-0429
Gamache, Rejean	Magog	819-843-0258 Ex 223	819-212-1864	Lachenaie Stn. (TQM)	450-966-6145	450-966-6214
Gorbell, Ian	1703	905-295-3645	289-213-1109	East Hereford Stn. (TQM)	819-844-0879	819-844-0881
Gordon, Gretchen	ERO	905-832-7333	416-435-4633	L'Assomption Office (TQM)	450-589-8421 or 5961	450-589-7612
Gregoire, Mitch	ERO	905-832-7301	647-526-2161			
Hamilton, Steve	Magog	819-843-0258 Ex 221	514-239-8275	Eastern Region Satellite Phones		
Harnden, Steve	209	905-388-5171	289-260-5473	Land Line Calling Prefix	480-768-2500	
Harris, Brandy	142	613-530-4622	613-329-5723	SAT to SAT Prefix	00-8816-XXXX-XXXX	
Hellinga, Rick	123	705-645-2481	705-644-4193	SAT to Land Line or Cellular	001 (XXX) XXX-XXXX	
Hudgin, Dean	130	905-832-7343	416-700-7010	Maple EOC SAT	8816-4140-3697	
Iseppon, Paul	1301	519-622-9980	289-260-6192	Stn. 119 SAT Sunridge	8816-4140-3714	
Karia, Jason	130	905-832-7360	416-779-3797	Stn. 123 SAT Bracebridge	8816-4149-6516	
Labbe, Gilles	1301	519-622-9980	289-260-8478	Stn. 127 SAT Barrie	8816-4140-3698	
Labbe, Mike	1301	519-622-9980	289-260-4493	Stn.130 SAT Maple	8816-4140-3719	
Lalonde, Roger	147	613-528-4700	613-330-8700	Stn. 209 SAT Hamilton	8816-4140-3717	
Landry-Ouellet, Remi	148	450-370-4729	514-220-2708	Stn. 211 SAT Lincoln	8816-4140-3718	
Langier, Ken	ERO	905-832-7325	416-458-4874	Stn. 1301 SAT Kirkwall	8816-4140-3699	
Langlois, Luc	Magog	819-843-0258 Ex 221	819-570-0369	Stn. 1703 SAT Niagara Falls	8816-4140-3713	
Lefebvre, Stephane	148	450-370-4728	514-213-0499	Stn. 136 SAT Grafton	8816-4149-6618	
Loiseau, Martin	148	450-370-4727	514-217-1396	Stn. 142 SAT Kingston	8816-4149-6041	
Loiseau, Olivier	148	450-452-2131	514-238-4251	Stn. 1401 SAT Iroquois	8816-4149-6619	
Lowe, Paul	130	905-832-7322	416-209-9815	Stn. 1206 SAT Deux Rivières	8816-4149-6624	
MacDonnell, Brian	ERO	905-832-7337	705-238-0685	Stn. 1211 SAT Pembroke	8816-4149-6617	
Marrison, Jeff	142	613-530-4620	613-532-5546	Stn. 1217 SAT Stittsville	8816-4149-6625	
Marrison, Shawn	142	613-530-4628	613-328-7349	Stn. 147 SAT Cornwall	8816-4149-6616	
Martin, Gerry	136	905-349-2112	905-376-0748	Stn. 148 SAT Les Cedres	8816-4140-3016	
McBride, Ken	ERO	905-832-7344	416-559-8681	Unit 0205 SAT - Gerald Pilon	8816-4140-3018	
McCann, Sean	1401	613-652-1350	613-328-8643	Unit 0202 SAT - Rejean Gamache	8816-4140-3015	
McClenaghan, Jim	147	613-528-4700	613-360-4700	Unit 9909 SAT - Luc Langlois	8816-4140-3014	
Montminy, Rob	1211	613-735-6895	613-633-3511	Lachenaie Stn. SAT	8816-4140-3019	
Moolbroek, Harold	144	613-348-3758	613-213-1375	East Hereford Stn. SAT	8816-4140-3017	
Moolbroek, Patti	142	613-530-4631	613-217-2749	C-GTCE Aviation SAT	8816-4149-6472	
Morison, Trisha	ERO	905-832-7341	905-960-3086	C-GTCC Aviation SAT	8816-2146-0088	
Neilore, Raj	ERO	905-832-7358	647-228-5097	C-GTCC Aviation SAT	8816-2146-0070	
O'Connell, Mark	209	905-388-5171	289-260-3514			
Palmer, Glen	ERO	905-832-7307	416-557-3419	TransCanada Emergency Contact Numbers		
Parkinson, Joel	TOR	416-869-2118	416-938-6526	Emergency Line	1-888-982-7222	
Patenaude, Patrick	148	450-370-4705	514-415-9405	Eastern Region EOC	905-832-7323	905-832-7391
Pearce, Matthew	1703	905-295-3645	289-257-1685	Everbridge	1-888-440-4911	
Pham, Quang	1217	613-831-8593	613-558-3782			
Pilon, Gerald	148	450-370-4724	514-246-0525	TransCanada Media Relations	1-800-608-7859	403-920-7859
Pinchera, Maria	ERO	905-832-7399	647-668-9069	Corporate EOC Fax		403-920-0018
Piromond, Marc	148	450-370-4737	514-212-8237			
Ranger, Carl	1211	613-735-6895	613-633-3510	Eastern Region Emergency Conference Lines		
Ryan, Kevin	1217	613-831-8593	613-296-3460	Command Post & Regional EOC Conference	1-866-792-1318	
Sauvageau, Pierre	L'Assomption	450-589-8421 or 5961	514-219-1258		ID: 2733439#	
Serrey, Rudy	148	450-370-4708	514-713-9922		PIN: 1742	
Shenouda, Shadi	ERO	905-832-7382	416-779-3064			
Sheldon, Adam	ERO	905-832-7316	416-528-5838	Operations Conference	1-866-797-9099	
Stanley, Bayne	130	905-832-7318	416-420-2176		ID: 1018566#	
Stanley, Ryan	130	905-832-7304	416-553-2243		PIN: 7397	
Stevenson, Brent	136	905-349-2112	905-375-7084			
Stojanac, Dario	ERO	905-832-7332	416-476-8242	TransCanada Gas Control Numbers		
Therault, Sophie	ERO	905-832-7342	416-526-5215	Gas Control Mainline		403-920-0016
Thibault, Carl	148	450-370-4704	514-386-9474			
Tomlinson, Brent	211	905-563-7316	905-351-7597	Eastern Console	403-920-5503	
Vaivada, Paul	ERO	905-832-7338	416-529-3092	Western Console	403-920-5502	
Van Berkum, Larry	130	905-832-7357	416-427-7090			
Veitch, Dave	130	905-832-7327	416-452-7338	North Bay Office	705-476-6210	
Webster, Gantry	1206	705-747-0022	705-497-4164	North Bay Warehouse	705-497-3732	705-476-8489
Whiteside, Wayne	130		403-461-5121	NB Warehouse After Hours	705-471-9427	705-497-3735
Wistead, Tammy	142	613-530-4600	613-328-4213			

INCIDENT MANAGEMENT SYSTEM

Emergency Management System

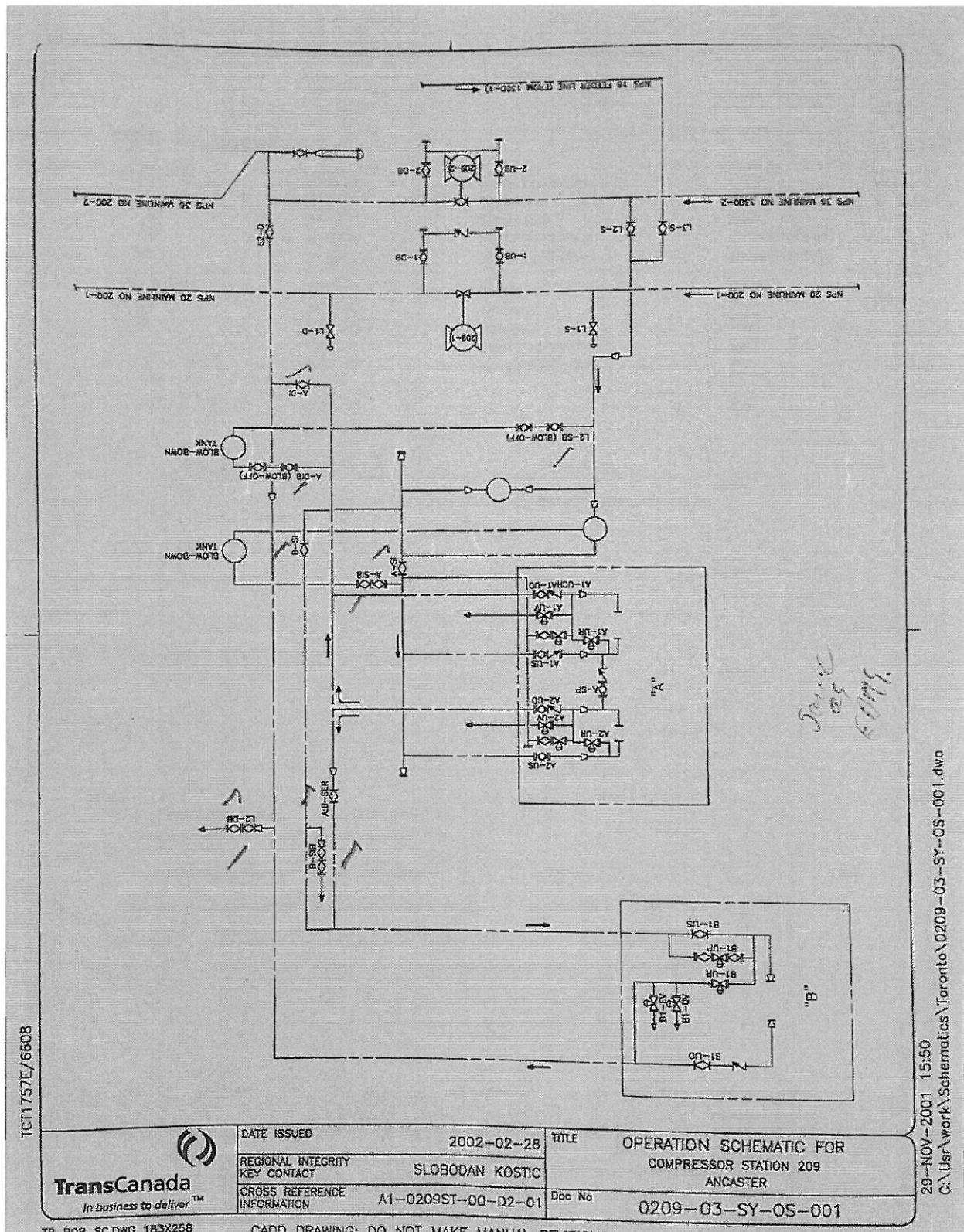


Corporate Program Manual

UNCONTROLLED IF PRINTED

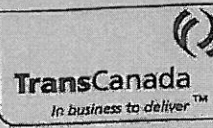
Zhao, Willie	ERO	905-832-7395	416-576-8456			
Summer Students				Sun Life Ontario	1-800-361-6212	
Alex Lefebvre	148	450-452-2131		Sun Life Quebec	1-800-361-2128	
Anje Mooibroek	144	613-348-3758				
Gabrielle Lefebvre	148	450-452-2131				
Joel Caren	130	403-461-3984				
Krista McConnell	1217	613-831-8593		Carlson Wagonlit- Calgary	1-888-720-2855	
Kristin Buchanan	142					
Lindsay Palmer	ERO	905-832-7365		Rick Bergeron (Ledcor)	613-936-9108	613-936-9585
Mark Ethier	1211	613-735-6895				
Tim Cowan	1401/147					
Travis Bush	130	403-461-3984		SCADA Support	403-920-6666 or	403-920-2378
				TransCanada Human Resources	1-855-429-8247	
Patrol Aviation Contact Numbers						
Patrol Aviation		905-893-7544		TC Benefits Centre	1-855-429-8247	
Fillon, Sebastien	Aviation	905-893-7544	416-529-3148	TC Stock Plan	1-877-380-7793	
Kellar, Chris	Aviation	905-893-0955	519-278-0130	TC Medical/Dental/PHSA	1-800-361-6212	
Matthews, Steve	Aviation	905-893-0955	519-940-1829	TC Pension Centre	1-888-705-0385	
Monroe, Steve	Aviation	905-893-7544	416-459-8214	TC Savings Plan	1-800-724-3402	
Muehibacher, Bradley	Aviation	905-893-0955		TC Employee Assistance Program	1-800-387-4765	
Sayewich, Dan	Aviation	905-893-7544	416-573-8102			
TransCanada Support Contact Numbers						
Avantis Support		1-888-546-3484				
Help Line (Computer Supt.)		403-920-2111				
Help Line (Computer Supt.)		1-888-546-3484				
Extensy Help Line		403-920-7944				
ECM Group		800-472-4904				
Procurement Support Ctr.		403-920-5400 ext.3				
Working Alone		1-877-877-0444				
Ontario One Call		800-400-2255				
Info Excavation		800-663-9228				
FIT Solutions		866-780-8890				
Maple 1-800 Number		800-827-5094				
Calgary 1-800 Number		800-661-3805				
Calgary ALL-CALL Number		877-985-7200				

V



TCT1757E/6608

29-NOV-2001 15:50 C:\usr\work\Schematics\Toronto\0209-03-SY-OS-001.dwg

 <p>TransCanada In business to deliver™</p>	DATE ISSUED	2002-02-28	TITLE	OPERATION SCHEMATIC FOR COMPRESSOR STATION 209 ANCASTER
	REGIONAL INTEGRITY KEY CONTACT	SLOBODAN KOSTIC	Doc No	0209-03-SY-OS-001
	CROSS REFERENCE INFORMATION	A1-0209ST-00-D2-01		

TB BOR_SC.DWG 1B3X258

CADD DRAWING: DO NOT MAKE MANUAL REVISIONS